



Located at I-94 & Sprinkle Road · Kalamazoo, Michigan

**Incomparable Rates Starting at \$2.95 PSF (NNN).  
Flexible Terms Available, Including Short-Term Accommodations.**

MIDLINK WEST is an 811,000 square foot, state-of-the-art facility that provides tenants with robust infrastructure and incomparable flexibility for advanced manufacturing, warehousing and distribution. Easily accessible from I-94, the facility offers significant Renaissance Zone and Foreign Trade Zone benefits, plus competitive rates—all in a world-class business park environment.

### Space Available

Inquire for more information

### Building

- 20' clear height
- 40' x 40' column spacing
- Air rotation heating units
- Fully sprinklered
- Energy efficient T-8 fluorescent fixtures
- Heavy power
- Epoxy and concrete floor
- New interior paint throughout
- Heavy floor-load capacity (1,000 LBS/SF)
- Insulated steel stud/drywall demising walls
- Aluminum and glass commercial-style entry
- Truck court with automated gate (240' wide)

### Central Location

- 1 hour south of Grand Rapids
- 2 hours west of Detroit
- 2 hours east of Chicago
- 3 ½ hours north of Indianapolis

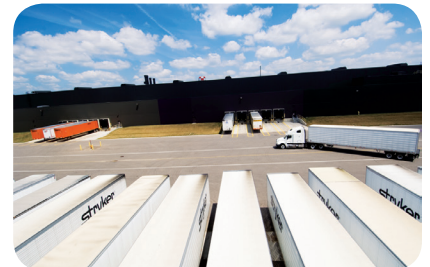
### Utilities

- Fiber optic: dual sonnet ring available
- Electric power: 13,800V @ 60MVA
- Natural gas: 167,515 therms per month @ 20 psi
- Kalamazoo city water: 3 independent feeds looped

### Renaissance Zone and Foreign Trade Zone

Tax Savings through 2017 (with extensions possible):

- Abatement –Michigan Corporate Tax
- Abatement –Personal Property Tax
- Abatement –Real Property Tax
- PA 198 Abatements Available
- Foreign Trade Zone Available

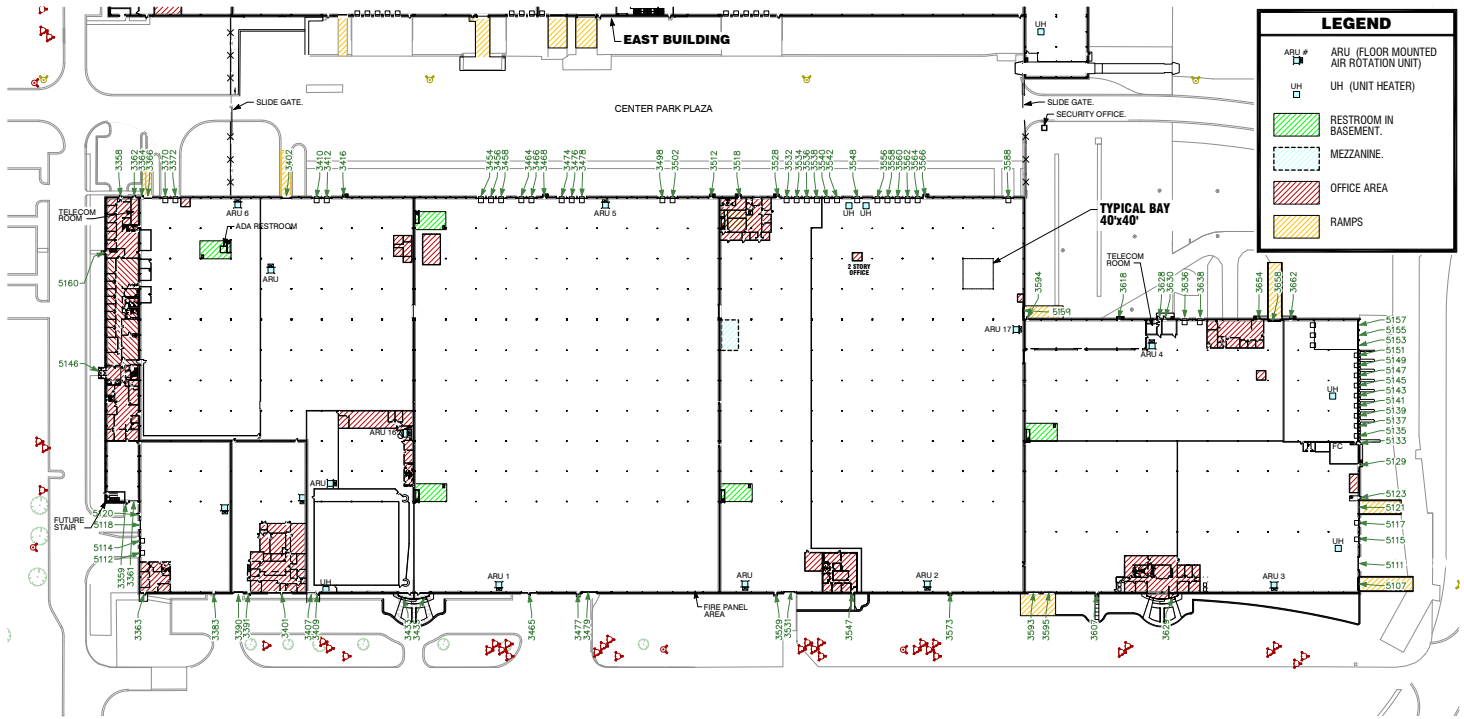


### For More Information, Contact:

Matt Callander, CCIM  
269-349-1000 (Office)  
269-271-5187 (Mobile)  
mcallander@ccmichigan.com

David Keyte  
269-373-8104 (Office)  
269-806-0554 (Mobile)  
dkeyte@ccmichigan.com

## Floor Plan



## Overall Park Site Plan

