



AVAILABLE FOR LEASE OR SALE  
**1300 64th Street**  
Emeryville, CA



**Michael Karp**  
Managing Director  
+1 (510) 267 6009  
[michael.karp@cushwake.com](mailto:michael.karp@cushwake.com)  
Lic. #01010085

**Jeff Leenhouts**  
Managing Director  
+1 (510) 267 6014  
[jeffrey.leenhouts@cushwake.com](mailto:jeffrey.leenhouts@cushwake.com)  
Lic. #01063048

555 12th Street, Suite 1400  
Oakland, CA 94607  
(o) +1 510 465 8000  
(f) +1 510 465 1350  
[www.cushmanwakefield.com](http://www.cushmanwakefield.com)





## 1300 64th Street *Emeryville, CA*

### ±24,931 Sq. Ft. of Creative/Flex/Light Manufacturing/Storage Space

- ±5,000 Sq. Ft. 2nd floor office - renovated in 2007. Great mix of privates and open office areas
- Huge kitchen/break area. IT room with dedicated HVAC
- Wooden bow truss roof, skylights, sprinklered and distributed power (400A, 120/240V, 3 Phase) throughout the warehouse
- 16' to bottom of truss
- Perimeter windows upstairs and down, which provide ample natural light throughout the offices and warehouse
- Elevator served
- Hard-to-find storage and distribution space - MUR zoning permits ongoing use
- Ideal urban last-mile distribution location
- Two recessed (30') docks providing off-street loading with motorized doors
- Heated high-bay space provides comfortable environment for tech and creative space uses
- Off-street parking - fully secured with fence and gate
- Excellent Emeryville location, walking distance to many retail amenities, housing and transportation
- Immediate access to I-80/I-580 and convenient access to San Francisco, downtown Oakland and the East Bay



**Michael Karp**  
Managing Director  
+1 (510) 267 6009  
michael.karp@cushwake.com  
Lic. #01010085

**Jeff Leenhouts**  
Managing Director  
+1 (510) 267 6014  
jeffrey.leenhouts@cushwake.com  
Lic. #01063048

555 12th Street, Suite 1400  
Oakland, CA 94607  
(o) +1 510 465 8000  
(f) +1 510 465 1350  
www.cushmanwakefield.com

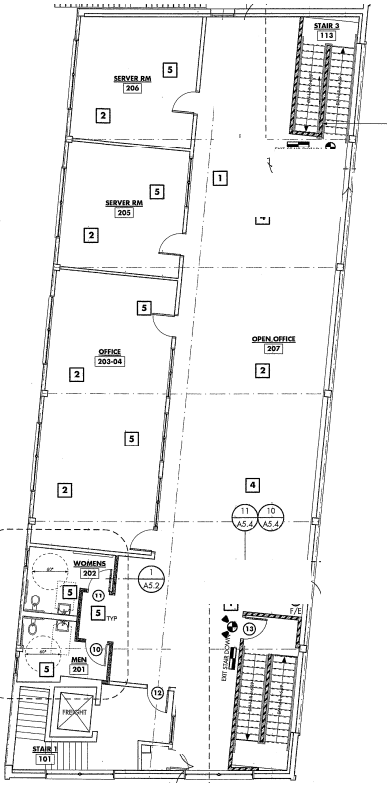


# 1300 64th Street Emeryville, CA

## FIRST FLOOR AND SITE PLAN



## SECOND FLOOR PLAN



\* Not to Scale

**Michael Karp**  
Managing Director  
+1 (510) 267 6009  
michael.karp@cushwake.com  
Lic. #01010085

**Jeff Leenhouts**  
Managing Director  
+1 (510) 267 6014  
jeffrey.leenhouts@cushwake.com  
Lic. #01063048

555 12th Street, Suite 1400  
Oakland, CA 94607  
(o) +1 510 465 8000  
(f) +1 510 465 1350  
www.cushmanwakefield.com



# 1300 64th Street Emeryville, CA

## TRANSPORTATION MAP

**1 EMERY GO ROUND**  
Free Emery Go Round, provides a shuttle service to the MacArthur BART station. The shuttle takes approximately 10 minutes and runs from 7am to 7pm on weekdays. On weekends a modified route operates from 9am to 7:30pm. More information can be found at [www.emerygoround.com](http://www.emerygoround.com)

**2 MACARTHUR BART STATION**  
The MacArthur BART can be accessed by Emery Go Round (10 minute commute) providing easy access to San Francisco and Oakland International Airports, Downtown San Francisco, Livermore, Pittsburg, Richmond and Fremont. More information can be found at [www.bart.gov](http://www.bart.gov)



**3 AC TRANSIT BUS STOP**  
AC Transit, Route 26 stops just a few blocks from Atrium and offers bus services throughout Emeryville and Oakland, including stops at the West Oakland and 12th Street BART. More information can be found at [www.actransit.org](http://www.actransit.org)



**4 EMERYVILLE AM TRAK**  
Amtrak, the Emeryville station is conveniently located less than 1 mile from Atrium and connects you easily to Oakland, San Jose, or Sacramento. More information can be found at [www.amtrak.com](http://www.amtrak.com)

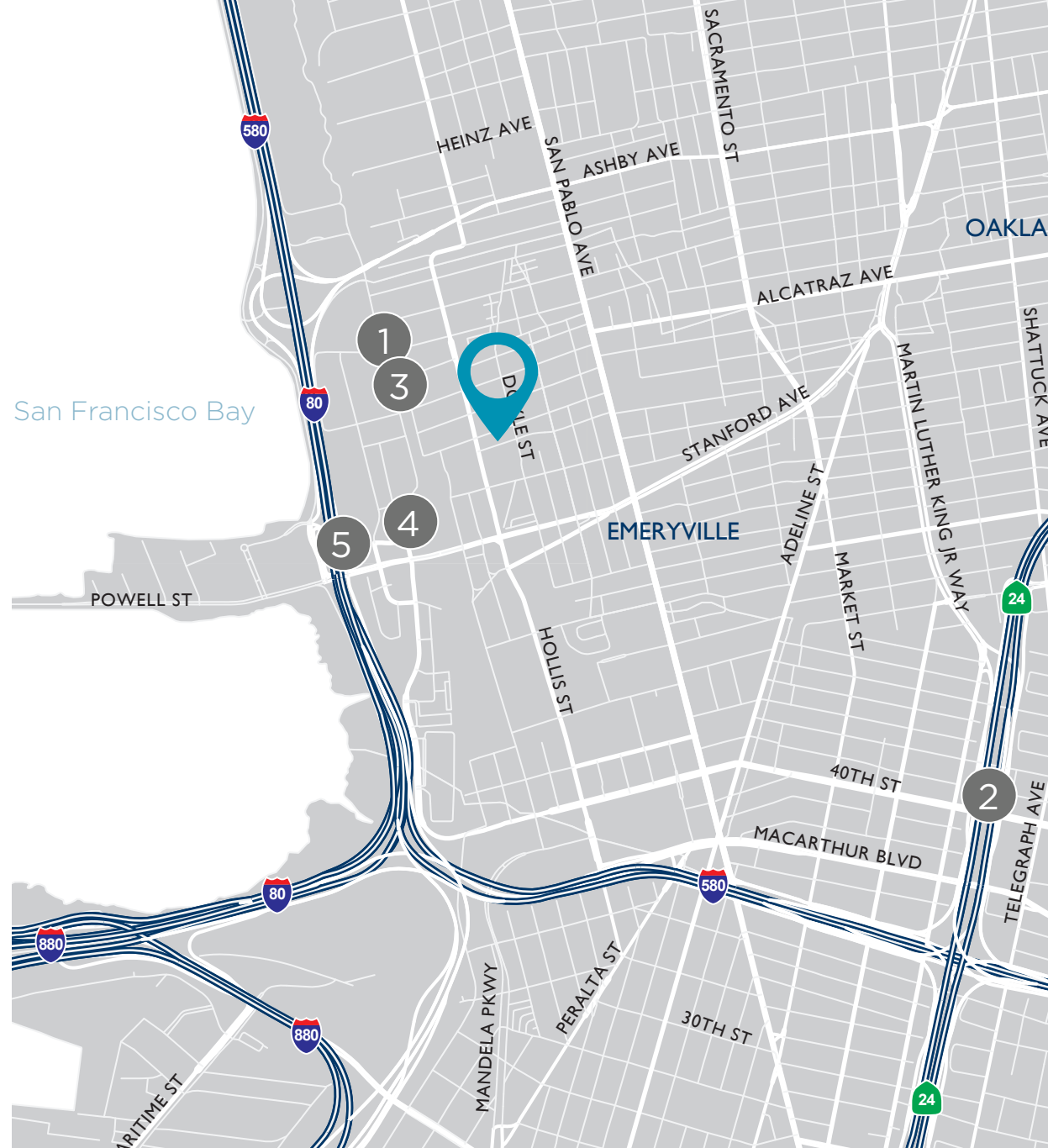


**5 TRUCK ROUTE**



### OAKLAND INTERNATIONAL AIRPORT

Oakland International Airport, is located 14 miles south and accessible by Emery Go Round, BART and car in under 30 minutes. Oakland airport is a hub for Southwest Airlines and provides service to cities across the US, Mexico and Europe. [www.oaklandcitycenter.com/parking](http://www.oaklandcitycenter.com/parking)



**Michael Karp**  
Managing Director  
+1 (510) 267 6009  
[michael.karp@cushwake.com](mailto:michael.karp@cushwake.com)  
Lic. #01010085

**Jeff Leenhouts**  
Managing Director  
+1 (510) 267 6014  
[jeffrey.leenhouts@cushwake.com](mailto:jeffrey.leenhouts@cushwake.com)  
Lic. #01063048

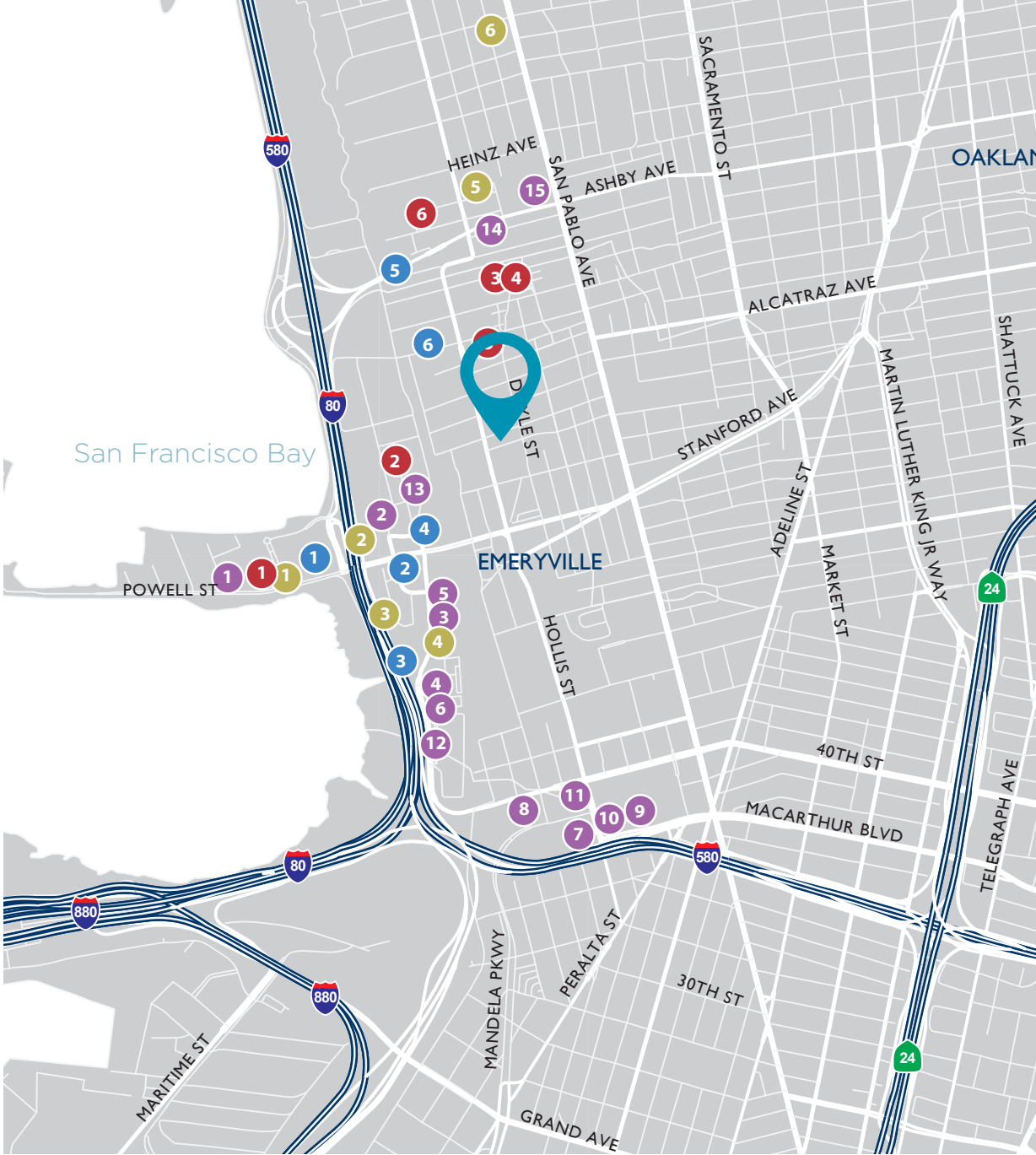
555 12th Street, Suite 1400  
Oakland, CA 94607  
(o) +1 510 465 8000  
(f) +1 510 465 1350  
[www.cushmanwakefield.com](http://www.cushmanwakefield.com)



# 1300 64th Street Emeryville, CA

## AMENITIES MAP

BANK		
1	SUMMIT BANK	2000 POWELL ST EMERYVILLE
2	WELLS FARGO BANK	5801 CHRISTIE AVE EMERYVILLE
3	CHASE	5747 CHRISTIE AVE EMERYVILLE
4	BANK OF AMERICA	5632 BAY ST EMERYVILLE
5	WELLS FARGO	2929 7TH ST BERKELEY
6	BANK OF AMERICA	2546 SAN PABLO AVE BERKELEY
HOTEL		
1	HILTON GARDEN INN	1800 POWELL ST EMERYVILLE
2	FOUR POINTS	1603 POWELL ST EMERYVILLE
3	COURTYARD	5555 SHELLMOUND ST EMERYVILLE
4	HYATT HOUSE	5800 SHELLMOUND ST EMERYVILLE
5	MEYER CREST LIMITED	725 FOLGER AVE BERKELEY
6	OAKWOOD CORP. HOUSE	
GYM		
1	TOWER FITNESS	2000 POWELL ST EMERYVILLE
2	IN SHAPE	6005 SHELLMOUND ST EMERYVILLE
3	CROSSFIT OAKLAND	1313 67TH ST EMERYVILLE
4	MAX'S GYM	1313 67TH ST EMERYVILLE
5	SOBEKICK GYM	6460 HOLLIS ST EMERYVILLE
6	IRONWORKS CLUB	800 POTTER ST BERKELEY
RETAIL		
1	UPS STORE	2340 POWELL ST EMERYVILLE
2	FEDEX	5895 CHRISTIE AVE EMERYVILLE
3	APPLE STORE	5656 BAY ST EMERYVILLE
4	BARNES & NOBLE	5604 BAY ST EMERYVILLE
5	J. CREW	5667 BAY ST EMERYVILLE
6	WEST ELM	5602 BAY ST EMERYVILLE
7	BEST BUY	3700 MANDELA PKWY OAKLAND
8	TARGET	1555 40TH ST EMERYVILLE
9	HOME DEPOT	3838 HOLLIS ST EMERYVILLE
10	OFFICE DEPOT	3535 HOLLIS ST EMERYVILLE
11	MICHAELS	3991 HOLLIS ST EMERYVILLE
12	IKEA	4400 SHELLMOUND ST EMERYVILLE
13	PUBLIC MARKET	5959 SHELLMOUND ST EMERYVILLE
14	URBAN ORE	900 MURRAY ST BERKELEY
15	LOOKING GLASS	1045 ASHBY AVE BERKELEY



**Michael Karp**  
Managing Director  
+1 (510) 267 6009  
michael.karp@cushwake.com  
Lic. #01010085

**Jeff Leenhouts**  
Managing Director  
+1 (510) 267 6014  
jeffrey.leenhouts@cushwake.com  
Lic. #01063048

555 12th Street, Suite 1400  
Oakland, CA 94607  
(o) +1 510 465 8000  
(f) +1 510 465 1350  
www.cushmanwakefield.com





# 1300 64th Street Emeryville, CA

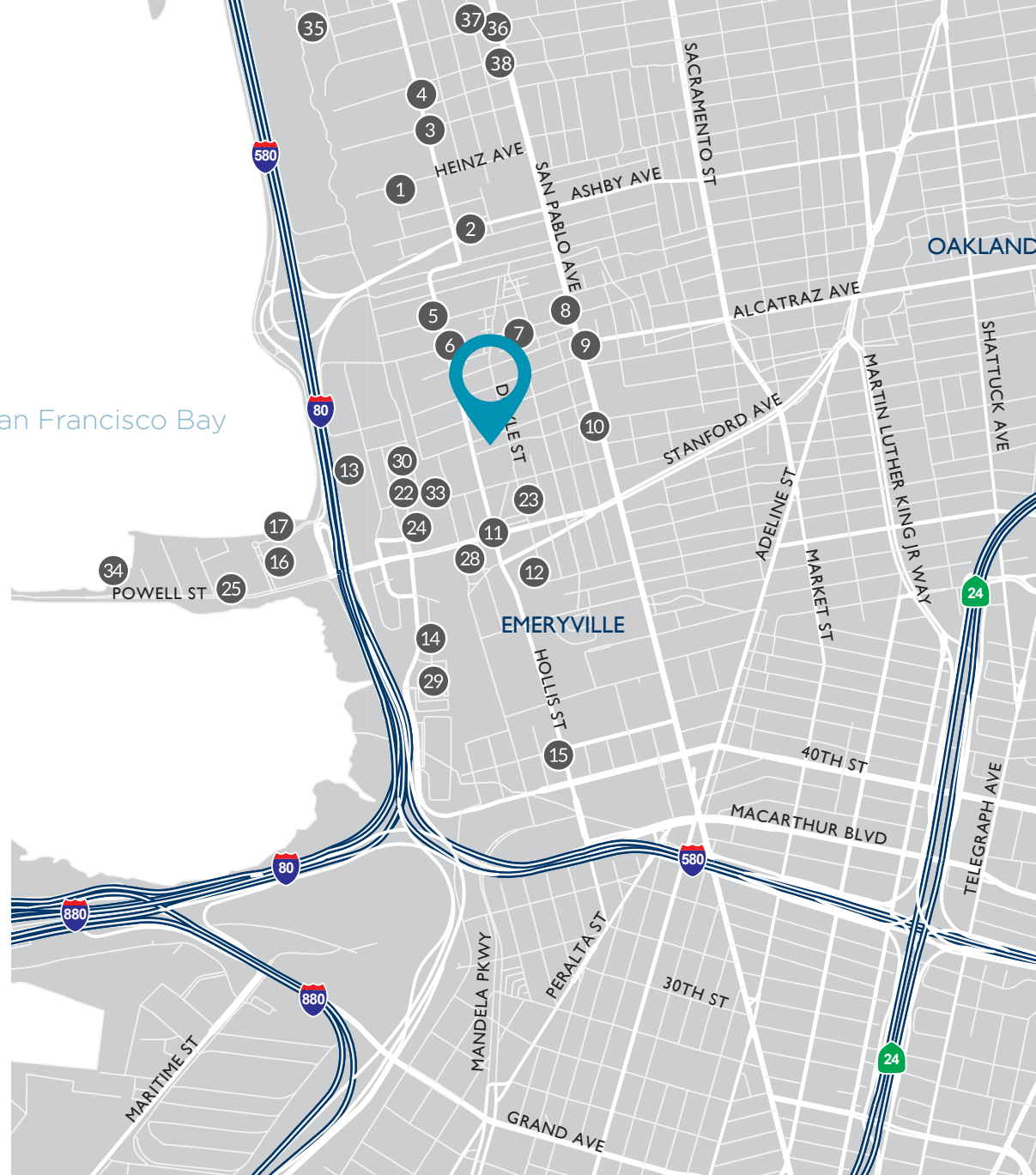
## FOODIE MAP

	RESTAURANT NAME	ADDRESS	YELP RATING
1	RIVA CUCINA	800 HEINZ AVE	4
2	SPOON KOREN	933 ASHBY AVENUE	4
3	900 GRAYSON	900 GRAYSON STREET	4
4	NINA'S CAFÉ	2703 7TH STREET	4
5	ROTTEN CITY PIZZA	6613 HOLLIS STREET	4
6	JASMINE BLOSSOM	6520 HOLLIS STREET	4
7	FARLEY'S ON 65TH	1195 65TH STREET	4
8	TRIBU CAFÉ	6501 SAN PABLO AVE	4
9	ACTUAL CAFÉ	6334 SAN PABLO AVE	4
10	PEPPLES DONUT FARM	6037 SAN PABLO AVE	4
11	THE BUREAU 510	5800 HOLLIS STREET	3.5
12	DOYLE STREET CAFÉ	5515 DOYLE STREET	4
13	ROYA'S GARLIC GARDEN	6363 CHRISTIE AVENUE	4
14	CAFFE DUETTO	5646 BAY STREET	4
15	RUDY'S CAN'T FAIL CAFÉ	4081 HOLLIS STREET	4
16	SPECIALTY'S	1900 POWELL	3
17	CHEVYS	1890 POWELL	3
22	HOT ITALIAN	5959 SHELLMOUND ST.	4
23	TOWNHOUSE BAR & GRILL	5862 DOYLE STREET	4
24	PAMIR AFGHAN	5959 SHELLMOUND ST.	4
25	ROBA'S PIZZA	2320 POWELL STREET	4
27	LOS CANTAROS TAQUERIA	4115 SAN PABLO AVE	4
28	HONOR KITCHEN	1411 POWELL STREET	4
29	BUCKHORN GRILL	5614 BAY STREET	3.5
30	MEDITERRANEO PIZZA	5959 SHELLMOUND ST.	3.5
33	PUBLIC MARKET	5959 SHELLMOUND ST.	3.5
34	TRADER VIC'S	9 ANCHOR DRIVE	3.5
35	VIK'S CHAAT	2390 4TH STREET	4
36	PAISON	2514 SAN PABLO AVE	4
37	LONGBRANCH SALOON	2512 SAN PABLO AVE	4
38	KC'S BBQ	2613 SAN PABLO AVE	4

**Michael Karp**  
Managing Director  
+1 (510) 267 6009  
michael.karp@cushwake.com  
Lic. #01010085

**Jeff Leenhouts**  
Managing Director  
+1 (510) 267 6014  
jeffrey.leenhouts@cushwake.com  
Lic. #01063048

San Francisco Bay



555 12th Street, Suite 1400  
Oakland, CA 94607  
(o) +1 510 465 8000  
(f) +1 510 465 1350  
www.cushmanwakefield.com

